



# East India Corporation

## Company profile

A Pioneer In High Tech Automation Solution, Design & Engineering of Special Purpose Machine, Vision Inspection System and DAQ.



**EAST INDIA CORPORATION**

Expert People, Perfect Solution.



# Overview

---

EIC is one of the Pioneers in Providing Dependable Automation Solution to Process Industries. We offer a suite of integrated solution on various Domains and assist in selection and operation of the high tech components used to automate machinery. These include intelligent sensors, PLC/PAC Controller, industrial computers, vision systems, AC/DC Drives, Mechanical components (rails, guides, ball screws, actuators, etc.), human machine interface, safety equipment's, and related services (e.g. panel building, custom software, custom assemblies, product integration, and training).

We are associated with National Instruments as a System Integrator. We Use Product and Solutions on NI Platform in the field Of High-Speed Data Acquisition, Plant Control /SCADA Solution, Condition Monitoring system, Vision Inspection System and Power Quality Monitoring System.

We are an authorized partner of M/S ideaForge Technology for UAV/Drone based solution in the field of surveillance, GIS mapping, photogrammetry, etc for academia, Process Industries, Mining Industries, Power plants etc.

Our team comprises of Experienced Engineers with vast experience in the area of Automation, Image processing, Embedded System, Engineering Design and Software Development.

## Our Objective

---

- ❖ To Grow as World Class Company Delivering World class Quality Products with optimum safety standards.
- ❖ To Provide an Economical and Dependable Solution.
- ❖ To Build and Practice Fair and Ethical work culture through dedicated team work for achieving continuous improvement and effective Quality Management Systems.
- ❖ To Create and maintain congenial work atmosphere for progressive and sustainable growth of our employees.

## Our Mission

---

Our Mission is to be Most Trustworthy companies committed to excellence.

## Our Vision

---

Our Vision is to be a customer Focused company delivering Quality products and Services as Per Customer expectations.

## Quality Policy

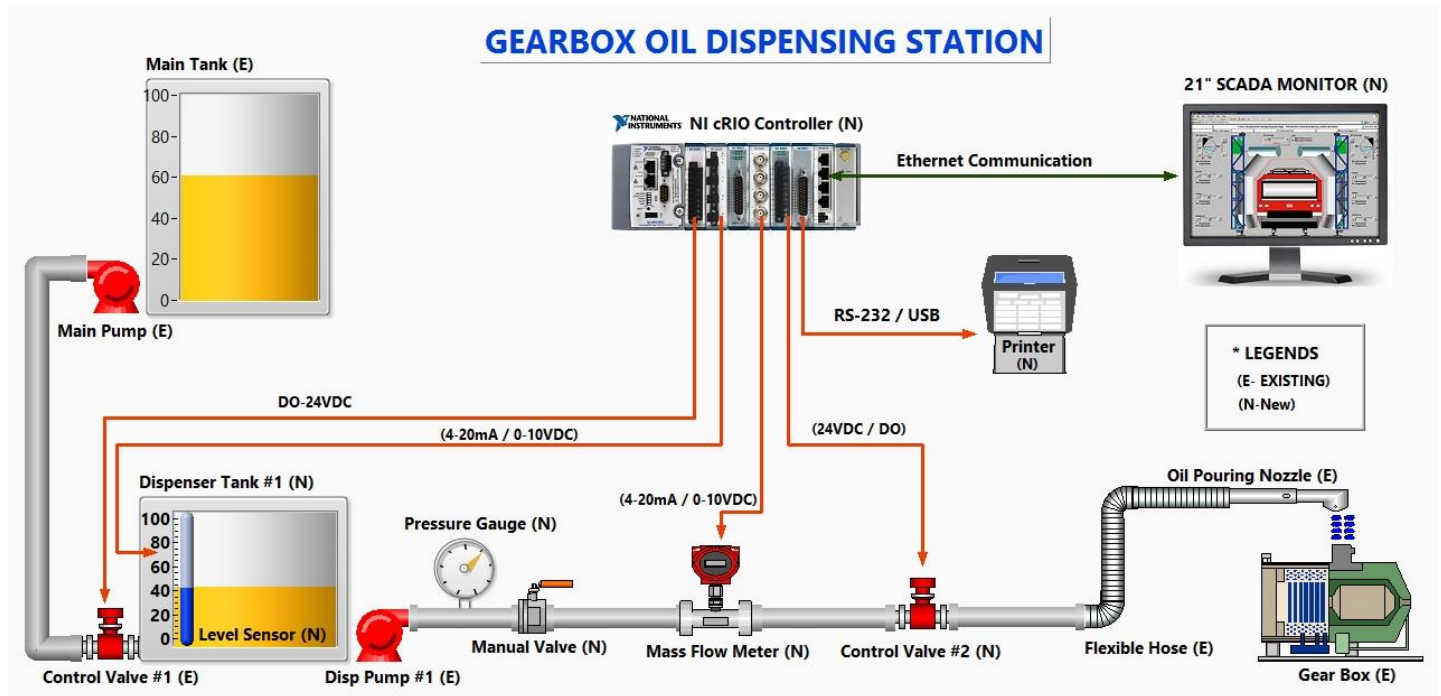
---

We are committed to deliver High Quality Products & Services in Time ensuring user Safety and Ease of use.

## ***OUR PRODUCTS & SERVICES.***

# Process Control & SCADA System

We Offer an Advance PAC based intelligent Process control System for Steel, Power and Automotive Industries. The System is based on National Instruments Programmable Automation Controller (PAC) along With HMI/SCADA developed in LabVIEW. The system offers more flexibility in terms of I/O Interface, Logic Implementation and Multiple Display.

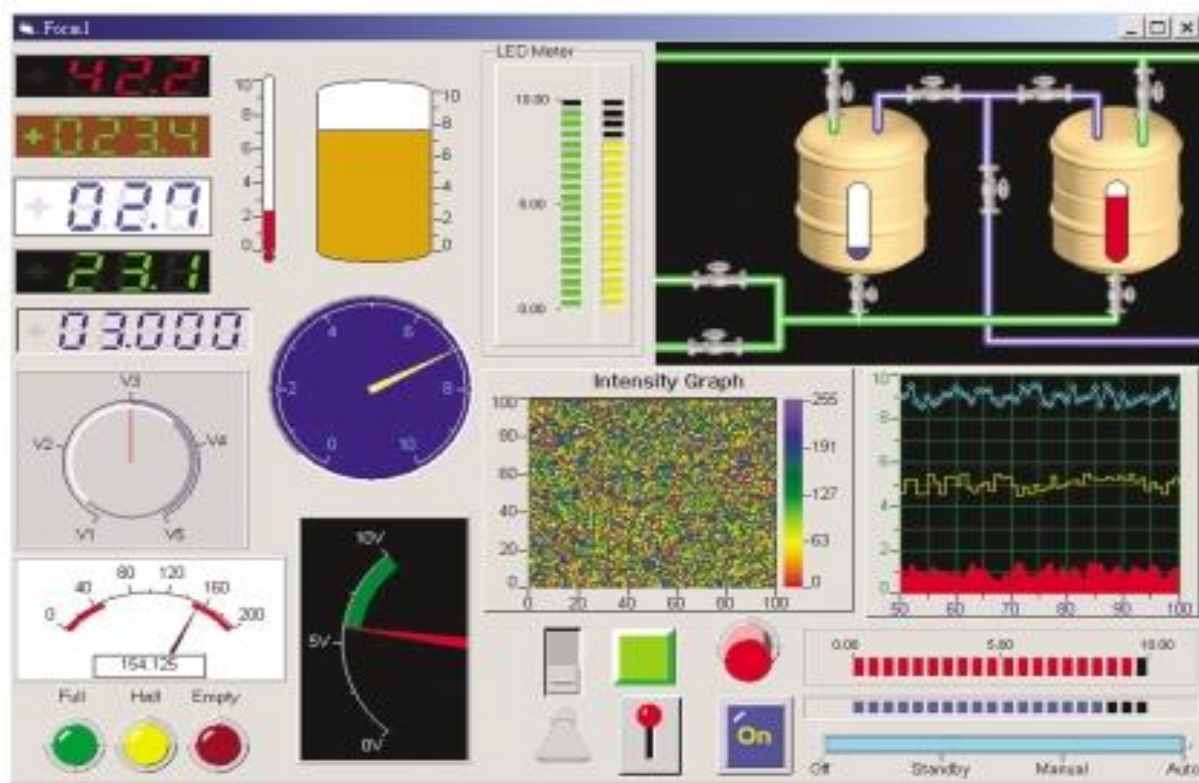


The System Offers Various advantages over Traditional PLC based control system.

- ❖ PAC (Programmable Automation Controller) is a combination of PLC ruggedness with a processing Speed of computer. A PAC with Conformal coating can work up to 150 Degree Centigrade and Can Measure and generate output in Nanoseconds.
- ❖ It uses a Single Software for Process Logic Control and SCADA.
- ❖ The Software comes with an Unlimited Tag License.
- ❖ It can do Direct Data Analysis on the Data Coming from Field. User can Improvise Data By introducing Software Bandpass Filter, Use of mathematical tools like Laplace Transform, Fourier Transform, etc
- ❖ Multiple Format of Data Storage. I.e. CSV, Dat, RDBMS, PL/SQL, etc. Customized Alarming and report generation.
- ❖ OPC Connectivity to any OPC Compliant PLC.
- ❖ Customized Control on PAC SCAN/Cycle Time. User can modify Cycle Time as per Requirement.
- ❖ Support All Industrial protocols. I.e. Ethernet, Profibus, Canopen, Bluetooth, WI-FI, etc.

# High Speed Data Acquisition System

We offer a High Speed Data Acquisitions and Control system for Process industry and Academia. The DAQ is capable of measuring all Physical phenomena in Real Time using suitable sensor and transducers, For Example Pressure, Temperature, Acceleration, Noise, Vibration, Voltage, Current, Load cell, Strain Gauges, Power Harmonics, etc. The Data Logging speed is offered in Millisecond, Microsecond and Nano second.



Advantages of Our Data Acquisition system are as follows:-

- ❖ One Software Platform for All Kind of Controller i.e. PXI, PCI, USB, Serial, FPGA.
- ❖ Support All Kind Of sensor, Can provide excitation voltage to Transducer i.e. Strain Gauge, Load cell, etc.
- ❖ Support All Kind of Client/Server and Chain Network protocol Such as Modbus, Profibus, Rs232/485, etc.
- ❖ Provision of Data Logging in controller with Internal as well As External Hard Disk connected to Logger.
- ❖ Faster Data Transmission on Client Server Architecture. The DAQ Hardware Transmits data over Gigabit Ethernet Network (1000 MBPS).
- ❖ Wireless Data Transmission using WI-FI, GSM, 3G, Bluetooth, Infrared, Intranet/Internet Network.
- ❖ Flexibility of Customized Data recording and Reporting. User can store data in TDMS, CSV, Binary, etc.
- ❖ Customized Report Generation using NI- Diadem as well as report generation on MS-office Suit Excel, Access, Word, etc.

# Machine Vision Inspection System

---

We offer an advanced state of the art Camera Based machine Vision & image processing system for process Industries. The systems deliver instant improvements to any manufacturing process, enabling products to be made at higher speed, without defects and at lower cost. The System is mostly used for Surface Inspection of products for identification of Dimension, Part Nos, Bar Code, Overall Aesthetic, etc.



The System Offers Significant advantages over the Traditional Manual Human Inspection methods. While human inspectors working on assembly lines visually inspect parts to judge the quality of workmanship, machine vision systems use cameras and image processing software to perform similar inspections. Machine Vision inspection plays an important role in achieving 100% quality control in manufacturing, reducing costs and ensuring a high level of customer satisfaction.

Machine vision system inspection consists of narrowly defined tasks such as counting objects on a conveyor, reading serial numbers, and searching for surface defects. Manufacturers often prefer machine vision systems for visual inspections that require high speed, high magnification, around-the-clock operation, and/or repeatability of measurements.

We offer High Speed NI Smart Camera from 5 MP to 13 MP with an onboard processor for Instant Logic Processing and result. We Provide a Suite of Hardware Such As Smart Camera, IEEE 1394 Camera, GIGe Vision Camera, Frame Grabber Card, CVS, etc. with Automated Vision Inspection software for Solving complex inspection task.



# UAV/Drone Based Solutions

---

Drones are a valuable addition to any industrial facility's efforts, enabling limitless aerial perspective. The possibilities for drones to create real value are endless.

Drones open up new opportunities and generate efficiencies in industries such as mining, sea ports, oil & gas and other large industrial facilities. They have emerged as incredibly powerful, versatile industrial tools capable of completing a wide range of applications. Industry professionals are increasingly using drones to improve and optimize industrial processes as well as enhance operational efficiencies. Drones can be employed during various phases of the facility's lifecycle. The nearly limitless visibility, data gathering and analyzing capabilities make automated drones valuable for several industry sectors.



We Offer UAV/Drone based solution from OEM "M/S ideaForge Technology". We offer the following UAV/Drones:

- Ninja Micro Category UAV
- Q4c Small Category UAV
- Q4i Small Category UAV
- Netra V Series Small Category UAV
- Ryno - The Mapping Maestro

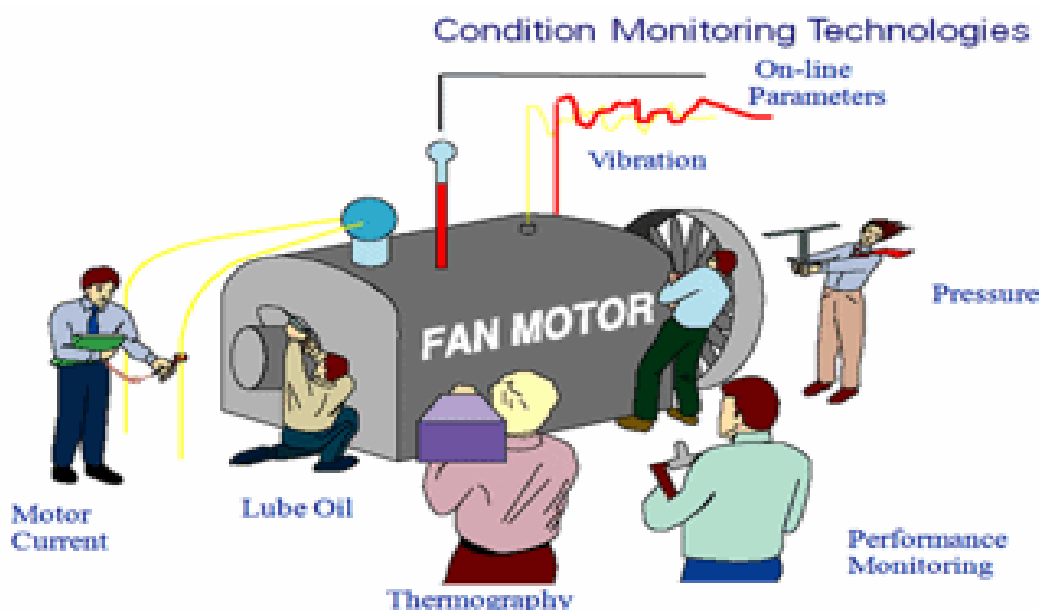
## **Applications of Our Drone are as follows: -**

- ❖ GIS Mapping/Surveying for topographic and hydrographic maps,
- ❖ Volumetric calculations for stockpiles
- ❖ Flood insurance maps
- ❖ Inspection & surveillance
- ❖ Construction Progress Monitoring

# Machine Condition Monitoring System.

---

Condition monitoring systems (CMS) monitor equipment degradation over a Period of Time and we Provide Solution for Predictive Maintenance System. For predictive Maintenance a Continuous Measurement of Speed, Torque, Vibration, Noise, Oil Quality, Acceleration, Velocity, Power consumption include Motor voltage and Current of any machinery/Equipment is Monitored. Whenever Values Reaches the Threshold Limit, An Alarm Is generated for Quick Action. Our CMS System is also used for Diagnosis and troubleshooting after Machine Failure. We Provide Both Online/Offline and Portable as well as Monitoring System for complete Shop Floor.



CMS offer Various Advantages. Maintenance, operations, and reliability engineers and technicians rely on condition monitoring and predictive maintenance techniques to ensure critical equipment such as turbines, generators, pumps, compressors, and motors operate more efficiently and last longer.

We offer a ready-to-run integrated hardware and software solution for online condition monitoring System thus helping companies to gain insight and improve operations and maintenance programs by understanding the health of rotating machinery. The System acquires and analyzes measurements, generates alarms, gives users the ability to visualize and manage data and results, and simplifies remote management for large numbers of monitoring systems.

- Built-in analytics and alarming capabilities, and remote interactive visualization of waveform data.
- Easily scalable to hundreds of acquisition devices per server.
- Support for vibration and process measurements using integrated hardware options.
- Remote management of monitoring systems and users.
- IT-friendly security features include user and device authentication.



# Development of Special Purpose Machine.

---

We expertise on design and development of Special purpose Machine for Industry & Academia. Our Approach is to convert idea in to a Real World Machine. We provide Assistance from thought Process up to Commissioning.

We have a designed A Simulator for M/S Indo Danish Tool Room for the Simulation of bottling process in Beverage Industry. The simulator consists of Moving Conveyor Belt, Water Filling Station, and Smart Camera for Inspection. The Bottles moves from One End to another get Filled and are inspected for Level/Impurities. A Pass Fail System has been employed for Selection and Rejection of Bottles. Our Scope of Supply was to design and Erect complete structure which includes Hardware like mechanical Structure of Bottling station, Conveyor belts etc. Electronics control System Including Motors, AC Drive, cRIO, Smart Camera etc. Software for Plant operation and Control.



We have also developed a Special Purpose Three Dimensional Scanner with GMI Sensing Device. The Scanner Scan Object on All three Dimension X, Y & Z using GMI Probe on a scanning resolution of 0.001mm. The GMI Sensing probe measures the change in Magnetic Property of any Material .The Scanner was Designed & Developed for Nonmagnetic Stainless steel Property Study mostly due to the effect of carburization in SS304. The Sensor was developed indigenously and the GMI sensing probe was made on the Design Provided by M/s NNL, Jamshedpur.



# Supply of Industrial Components & Spares.

---

We Supply Good Quality Products and spares to the Process Industry & Academia. Our Supply items are known for their Quality, Performance and Reliability. Our Scope of Supply includes Following:-

1. Various Kinds of Sensor Including
  - Thermocouple, RTD.
  - Strain Gauge, Load Cell (Block Type/Pillow Type) up to 10000 Kg
  - Pressure Gauge, Flow meters.
  - Vibration Sensor, Sound Sensor, Accelerometers.
2. Various Kinds of Readouts Including Digital Display, LED Display, HMI, SCADA, Desktop PC, etc.
3. Various Kinds of Actuators Including Electromechanical Actuator for driving linear Load up to 5000 kgs, Hydraulic System including Servo Valve, Manifold, Power Packs, etc.
4. Spares and Components of Guiding System Including CPC, EPC, OPG, Kamberroller, etc.
5. Supply of Various Kinds of Motor AC/DC from 0.5 Kw to 150 KW.
6. Supply of Stepper Motor, Servo Motor with Drive for precision control.
7. Supply of VVFD for AC Motor Speed Control.
8. Supply of Drive Spares of make Siemens.
9. Supply of PAC/PXI Spares Including Controller, I/O Modules of Make National instruments.
10. Supply of Industrial Grade panel for PLC, Drive and Automation Components.
11. Supply of Air Shaft, Chucks, Slitters for slitting paper, Aluminum Foil, Plastic, etc.
12. Supply of Drives for Heating Control System.
13. Supply of High Speed Cameras for Vision Inspection System. We supply Camera on GIG Ethernet, IEEE 1394 (Fire Wire), Camera with Serial Link.

## Our Esteemed Customers:-



## Contact Us At:-

### Registered Factory Address:-

EIC House,  
Harharguttu, Near Kali Mandir,  
Jamshedpur, Jharkhand, India, Pin-831002.  
Website: - [www.eastindiacorporation.com](http://www.eastindiacorporation.com)  
E-Mail:- [eastindiacorporation@gmail.com](mailto:eastindiacorporation@gmail.com), [info@eastindiacorporation.com](mailto:info@eastindiacorporation.com)

Contact Person: - Mr. Rahul  
Phone: - +91-0657-2299488, 9709556777.